

infotec

Digital Network

*A new generation of
innovative applications
for the office*

infotec IS 2015 /IS 2018 /IS 2018D





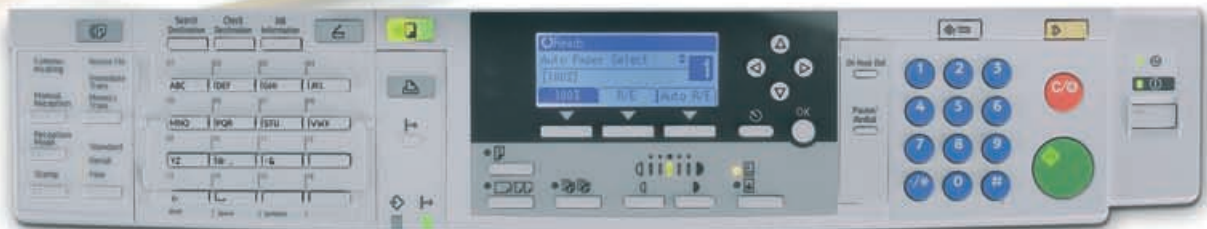
What does your printer do?

Scan, digitise and dispatch documents straight from the document glass, or in a batch via the document feeder, or communicate instantly anywhere in the world with scan-to-email or directly to a directory with ScanRouter. Choose TIFF, Multipage-TIFF or PDF formats at up to a razor sharp 600 dpi resolution.

And if that's not enough, the IS 2015, IS 2018 and IS 2018D provide LAN-fax functionality allowing faxing straight from the PC, or high-speed internet faxing for even greater time and cost saving opportunities.

Powerful black & white digital copying technology delivers economical printing meaning nothing is too much for the IS 2015, IS 2018 and IS 2018D multifunctional systems.

What does your printer do?



Printing at economical copying prices:

- IS 2015: up to 15/9 pages per minute A4/A3
- IS 2018: up to 18/10 pages per minute A4/A3
- IS 2018D: up to 18/10 pages per minute A4/A3
- Up to 600 dpi resolution, 256 grey scales
- Flexible paper capacity up to 1,600 sheets
- Printing up to A3 format
- Duplex printing (IS 2018D only)
- **NEW:** RPCS – driver interface optimised for common office applications
- **NEW:** Job binding with RPCS – pagewise combination of new print jobs from different applications
- Flexible interfaces:
Ethernet 100 Base-TX/10 Base-T, **NEW:** USB 2.0
Options: Parallel bi-directional,
NEW: Wireless LAN IEEE802.11b,
FireWire IEEE 1394 or Bluetooth
- PCL6, PCL5e, **NEW:** Adobe PS3 (option)
- Easy to install on a network or as a workplace printer



1A Digital copying:

- Text, photo and text/photo mode
- Scan once - print many



Network-based fax communication:

- SUPER G3 fax
- **NEW:** Internet faxing
- **NEW:** LAN faxing (PC faxing) with cover page editing



NEW: Scanning in black & white at up to 600 dpi resolution:

- Scan to TIFF, Multipage-TIFF and PDF
- Network scanning with ScanRouter
- Scan-to-email
- Scan-to-folder with ScanRouter
- TWAIN driver



State-of-the-art web-based system control:

- With the new WebImage Monitor via any given browser without installing additional software

The way to work today

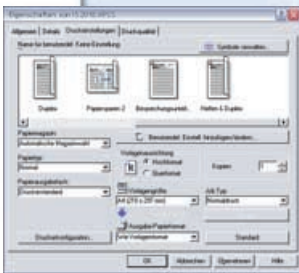
Reduce costs with every print

The optional printer/scanner module transforms the IS 2015, IS 2018 and IS 2018D systems into fast network or work-group printers far superior to conventional laser printers, and all at a cost per print comparable with copying.

NEW: RPCS – convenience in the office

RPCS (Refined Printing Command Stream) has been specifically developed for printing from popular office applications such as Word, Excel or PowerPoint. RPCS features an extremely convenient driver interface that can be adapted by any user to suit specific printing needs.

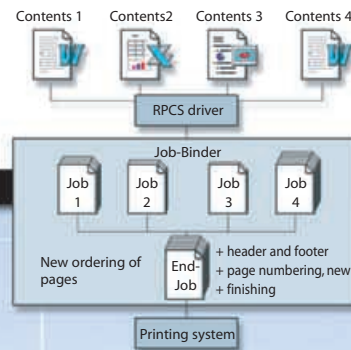
The IS 2015, IS 2018 and IS 2018D support numerous printer languages including PCL5e and PCL6 and optionally, Adobe PS 3. This enables printing from a whole host of common operating systems such as Win 9.x, Me, 2000, XP, NT4.0 as well as Unix and Macintosh.



Universal interfaces, simple installation

- NEW: USB 2.0 interface as standard for a direct connection to the workplace PC/print-server
- Ethernet 100Base-TX/10Base-T as standard, for interfacing with existing networks
- Optional interfaces for optimum flexibility: NEW for wireless communication: Wireless LAN IEEE802.11b* or Bluetooth*, NEW: FireWire IEEE 1394* or parallel bi-Centronics interface
- Support for common network protocols such as TCP/IP, IPX/SPX, AppleTalk, NetBEUI (only with SmartDevice Monitor)

* Only one optional interface can be installed. Wireless LAN and standard Ethernet cannot be used simultaneously



With the Job Binder, files are combined from different sources and applications to create a single print job

NEW: Comprehensive software package for more efficient working

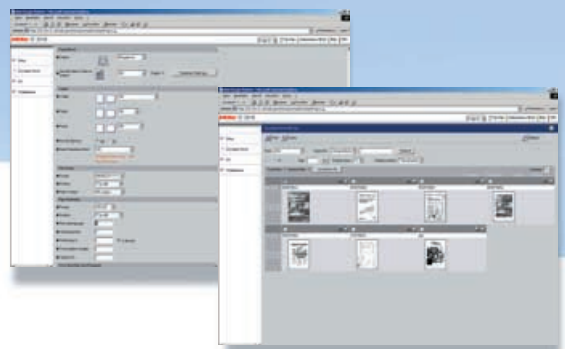
As part of the optional printer/scanner module, the IS 2015, IS 2018 and IS 2018D systems are equipped with a user-friendly software package featuring ScanRouter, DeskTopBinder Lite, SmartDevice Monitor and more. This added functionality allows network printing and network scanning (TWAIN), as well as convenient management of stored files and documents, to be carried out on your PC.

DeskTopBinder Lite

DeskTopBinder Lite allows files and documents to be archived, managed, stored, duplicated, repeat printed, searched for, deleted and forwarded. In addition, files or file formats from different applications can be combined or merged into a single print job without having to open the particular application.

State-of-the-art web-based control

Without having to invest in or install any additional software, the new WebImage Monitor uses a standard web browser, such as Internet Explorer or Netscape, to allow you to alter network settings, manage an email address book and monitor the job log or machine status, directly from your PC.



System features

A new way to scan

With the optional printer/scanner module the IS 2015, IS 2018 and IS 2018D systems become true network scanners working at up to 600 dpi resolution and at speeds of up to 25 pages per minute (using TWAIN driver) or 43 pages per minute (using ScanRouter).

Scan-to-email: All scanned data can be sent as an email attachment to any email address, via the Internet or intranet.

Scan-to-folder via ScanRouter: Via the document glass or the (ADF/ARDF) fast feeder, paper-bound documents are converted into digital data as TIFF, MultiPage-TIFF, or PDF files and transferred to predefined directories using ScanRouter.

Convenient faxing

With its powerful, convenient functions, the fax option for the IS 2015, IS 2018 and IS 2018D systems offers new, efficient network-oriented fax communication.

Incoming fax data is stored temporarily in the fax memory, without an additional server, and printed out using an individual user code.

PC faxing

The optional fax and printer/scanner module delivers PC faxing as standard. This allows fax messages to be sent directly via a LAN and eliminates the need to print the fax message to send. The LAN fax driver's editing feature allows creation of personalised cover sheets and address book data can be imported and exported through CSV support.

Internet faxing

Internet faxing allows global communication at economical surfing costs. Fax messages are sent as emails with TIFF attachments rather than via a telephone line. Just enter the email address and send. (The remote station must be an Internet-capable fax machine or a PC with its own email address.)

Digital technology	High quality input and output - copying and printing at 600 dpi, electronic sorting, text, text/photo and photo mode
Scan once - print many	Preserves the source documents, uniform quality output, reduced sound level
Innovative GW architecture	With the optional GW board, the basic system can be extended to include printer, scanner and/or fax functions
Powerful software components	Convenient document management
Browser-based WebImage Monitor eg via Internet-Explorer or Netscape	Without installing additional software: <ul style="list-style-type: none"> - Create and adjust network settings, view the job log and machine status - Create and adjust security settings: password, access control, IPP authorization - Address book control for scan-to-email
Automatic document feeder	Up to 40/50 (ADF/ARDF) source documents can be read-in
Duplex unit (IS 2018D only)	Automatic double-sided copying and printing at up to 95% machine speed
Paper capacity	Non-stop printing and copying up to 1,600 sheets
Paper feed from up to a maximum of 5 different trays (including bypass)	Use up to 5 types of paper simultaneously in a single copying job
Printer/scanner module (printing option)	Flexible interfaces allow simple integration into commonly used networks. Cross-platform printing
Numerous printer languages	<ul style="list-style-type: none"> - PCL5e, PCL6 and Adobe PS 3 (optional) guarantee printing from the common Windows, Mac and Linux applications - RPCS supports Windows applications, speeds up processing and is incredibly easy to use
Printer/scanner module (scanning option)	Up to 600 dpi network scanner, scan-to-folder via ScanRouter and scan-to-email
Enhanced fax module	Features include dual access, forwarding, image rotation, broadcast, send later, last number redial, authorised reception, transmit memory, lock memory, detection of blank pages, transmission protocol as well as double-sided transmission (IS 2018D only with ARDF and memory expansion)
Internet faxing	Fast faxing at economical surfing charges
LAN fax	Fax directly from a PC

Move with the times

The new infotec IS 2015, IS 2018 and IS 2018D will change the way you work.

With new applications for efficient working, each system offers a high degree of flexibility, ease of use and absolute reliability; plus printing at copying costs, inclusive of service and toner.

Innovative GW controller architecture (Ground Works), allows the basic 600 dpi digital copier to be upgraded to full multifunctional productivity, including printing, faxing, Internet or LAN faxing, scanning, scan-to-email and scan-to-folder (via ScanRouter).

The printer/scanner module includes software that allows paperless document processing, including merge files and document filing, as well as rapid distribution across the network.

So, as well as proven functions such as printing, copying and faxing, the infotec IS 2015, IS 2018 and IS 2018D deliver new opportunities for efficient and flexible document workflow in any office environment.



Maximum productivity right from the start

The IS 2015, IS 2018 and IS 2018D are equipped with a whole raft of sophisticated functions:

- Quick-Start-Up technology: warm-up time approximately 15 seconds; first copy in approximately 6.5 seconds
- Scan once - print many: scan documents once for continuous output at up to 15/9 or 18/10 pages per minute (A4/A3) with a uniform, high copying resolution of 600 dpi
- 95% duplex speed (IS 2018D only)
- Fast feeding of numerous sets of documents via the ADF or ARDF (IS 2018D only)
- Job output begins while scanning source documents is in progress
- Special digital functions including text, text/photo or photo mode, automatic paper format selection (even with letter formats), automatic image rotation
- Electronic sorting and rotational sorting (with optional paper tray)
- Flexible paper capacity of 350 sheets as standard and up to an optional 1,600 sheets

New Scanning functionality



New Fax functionality



Technical specifications

Technology

- Flatbed scanner with movable CCD image-sensing region
- Electro-photographic laser

Functions

- Laser printer
- Digital copier
- Scanner
- Super G3 Fax

Resolution

- Printing: up to 600 dpi
- Copying: up to 600 dpi, 256 grey scales
- Scanning: 100 to 600 dpi, 256 graduations
- Faxing: up to 200 x 400 dpi

Output speed

- IS 2015: up to 15/9 A4/A3 pages/min.
- IS 2018: up to 18/10 A4/A3 pages/min.
- IS 2018D: up to 18/10 A4/A3 pages/min.
Duplex: approx. 95% (only IS 2018D)

Paper: capacity, formats and weights

- **Standard**
 - IS 2015: 1x 250 sheets, A5 - A3, 60 - 90 gsm
 - IS 2018: 2x 250 sheets, A5 - A3, 60 - 90 gsm
 - IS 2018D: 2x 250 sheets, A5 - A3, 60 - 90 gsm
Duplex, A5 - A3, 64 - 90 gsm
- **Multi-Bypass:** 100 sheets, A6 - A3, 52 - 162 gsm
- **Options**
 - Paper tray: 1x 500 sheets, A5 - A3, 60 - 90 gsm
 - Paper tray: 2x 500 sheets, A5 - A3, 60 - 90 gsm
- **As a maximum**
 - IS 2015: 1,350 sheets
 - IS 2018/2018D: 1,600 sheets

Output capacity (A4, 80 gsm)

- Standard: 1x 250 sheets
- Internal stacker for fax output (option): 100 sheets

Dimensions, weights, power supply

- **Dimensions (W x D x H):**
 - IS 2015 550 mm x 568 mm x 420 mm
 - IS 2018 550 mm x 568 mm x 558 mm
 - IS 2018D 587 mm x 568 mm x 558 mm
- **Weight:** < 40 - 50 kg (depending on model)
- **Power supply:** 220-240V, 50/60 Hz
- **Power consumption:** < 1,28 KW

Software tools

- DeskTopBinder V2 Lite, ScanRouter V2
- SmartDevice Monitor for Client and Admin
- LAN-Fax M3, 1394 Utility
- Printer utilities for Mac and TWAIN drivers

Copier specifications

- First copy: approx. 6.5 sec.
- Warm-up time: approx. 15 sec. (basic version)
approx. 30 sec. (MFP)*
- 16 MB memory as standard
- Copies preselection up to 99 copies (simplex, duplex)
- Copier mode:
 - Text, photo, text/photo (print, copy, photography)
- ADS (Auto Density) manual or automatic density selection
- Zoom 50% to max. 200% in 1% steps
- Enlarge/reduce in 7 fixed stages
- Job start while scanning the source documents
- Electronic counter
- Combining of source documents: 2 in 1, 4 in 1

* Basic unit incl. printer/scanner module and/or fax module

Convenience functions

- 50 user codes
- Electronic sorting
- Rotational sorting with optional paper tray
- Scan once - print many
- Quick-Auto Start
- Automatic paper selection and paper alignment
- Energy-saving mode

Fax module (option)

- Compatibility: ITU-T (CCITT) G3
- Resolution:
 - 8 x 3.85, 8 x 7.7 l/mm, 8 x 15.4, 16 x 15.4 l/mm
 - 200 x 200/100 dpi, 200 x 400 dpi (A4)
 - 200 x 200/100 dpi (A3)
- Transmission time:
 - 3 sec. (200x100dpi)
 - 2 sec. with JBIG
- Scan speed:
 - approx. 1 sec. (200 x 200/100dpi)
 - approx. 2 sec. (200 x 400dpi)
- Modem speed: 33.600 bps
- Compression method: MH/MR/MMR, JBIG
- SAF memory, standard: 2 MB (160 pages)
- Memory back-up: 1 hour
- Speed dials (std.): 150
- Name dials (std.): 32 (out of 150 speed dials)
- 10 group dials (max. 100 numbers/group)
- 50 user codes (max. 200 programmes)
- Dual access, forwarding, image rotation, broadcast, send later, last number redial, authorised reception, transmit memory, lock memory, detection of blank pages and transmission protocol
- **Options**
 - Internet faxing, fax-to-email, LAN fax (in conjunction with printer/scanner module only)

Printer/scanner module (P/S module option)

- CPU TMPR4955B-300, 240 MHz
- 192 MB printer memory
- RPCS, PCL6, PCL5e, Adobe PostScript 3 (option)
- Network interface:
 - Standard:**
 - 100BASE-TX/10BASE-T (Ethernet RJ-45)
 - USB 2.0
 - Options:**
 - Parallel bi-directional IEEE 1284 (ECP)
 - FireWire IEEE 1394 (2 ports) or Wireless LAN IEEE802.11b* or Bluetooth
- TCP/IP, IPX/SPX, NetBEUI (SmartDevice Monitor required), AppleTalk (Auto Switching)
- Special features: MIB support, WebImage Monitor

* Wireless LAN and standard interface cannot be used simultaneously

Printer driver

- Win9x/Me/2000/XP/NT4.0, Win Server 2003
- Terminal Service, Unix, Novell Netware, NDPS gateway
- Mac (only PS3 option) OS 8.6 - 9.2x, OS X from 10.1 on

Scanning

- Scanning via the document glass
- Scanning via the ADF/ARDF source document feeder with TWAIN:
 - 25 pages/min. at 200dpi, A4
- with ScanRouter:
 - 43 pages/min. at 200 dpi, A4
- Scan mode:
 - text, text/photo, photo, grey scales
- Resolution: 100 to 600 dpi, 256 grey scales
- Formats: TIFF, Multipage TIFF, PDF
- Scan-to-email (100 email addresses can be stored)
- Scan-to-folder with ScanRouter

Options (quantity figures with 80 gsm paper weight)

- ARDF (only IS 2018D): 50 sheets
- Simplex source documents: A5 - A3, 40-128 gsm
- Duplex source documents: A5 - A3, 52-105 gsm
- ADF (IS 2015/2018): 40 sheets (A4)
- Simplex source documents: A5 - A3, 52-105 gsm
- Platen cover
- Paper tray 1x 500 sheets (PS460)
- Paper tray 2x 500 sheets (PS450)
- 1-bin-tray, 100 sheets, A5 - A3, 52-105 gsm (only IS 2018 and IS 2018D)
- Printer/scanner module
- Fax module
- Postscript
- GW-Board (required for printer/scanner- and fax module)
- Lower cabinet



infotec